

Hvordan konfigurere du SSO med Active Directory ved hjelp av SAML?

Ester Andersson - 2024-02-19 - API, SAML, integrasjoner og generelle innstillinger

Trinn 1 - Kontakt Learnifier

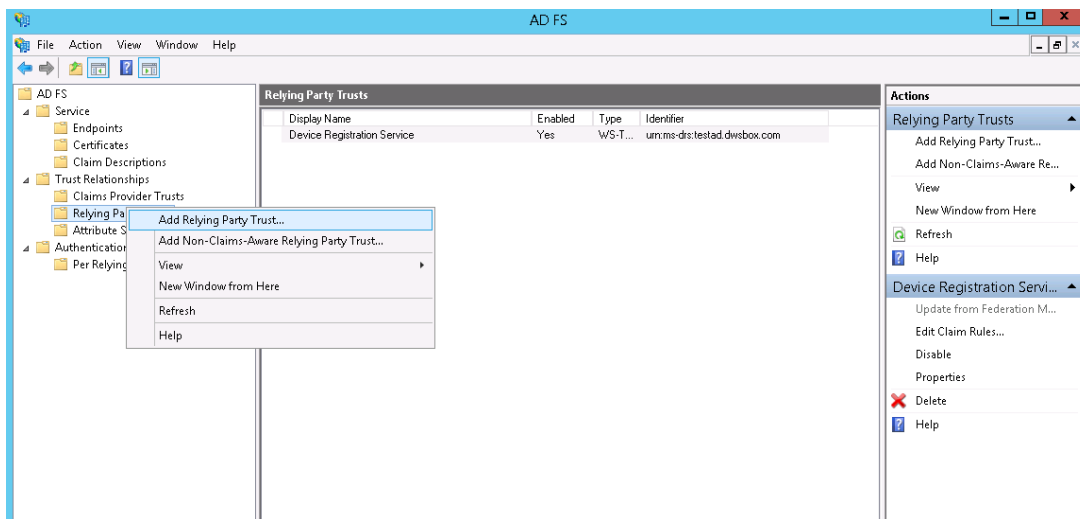
Kontakt support@learnifier.com og gi beskjed om at du ønsker å konfigurere SSO med Active Directory. Vi vil deretter gi deg en kundespesifikk metadata-URL å bruke.

OBS: Vi anbefaler at du bruker minst AD FS 3.0 (inkludert i Windows 2012R2) eller nyere.

Trinn 2 - Legg til Learnifier som en Relying Party Trust i ADFS

Start AD FS Management-verktøyet under Administrative Tools.

Velg mappen "Trust Relationships" og høyreklikk, og klikk deretter på "Add Relying Party Trusts".



På velkomstsiden i "Add Relying Party Trust Wizard" klikker du på Start.

Sørg for at alternativet "Import data about the relying party published online or on a local network" er valgt.

Angi den kundespesifikke metadata-URLen du mottok fra Learnifier. For eksempel, der du

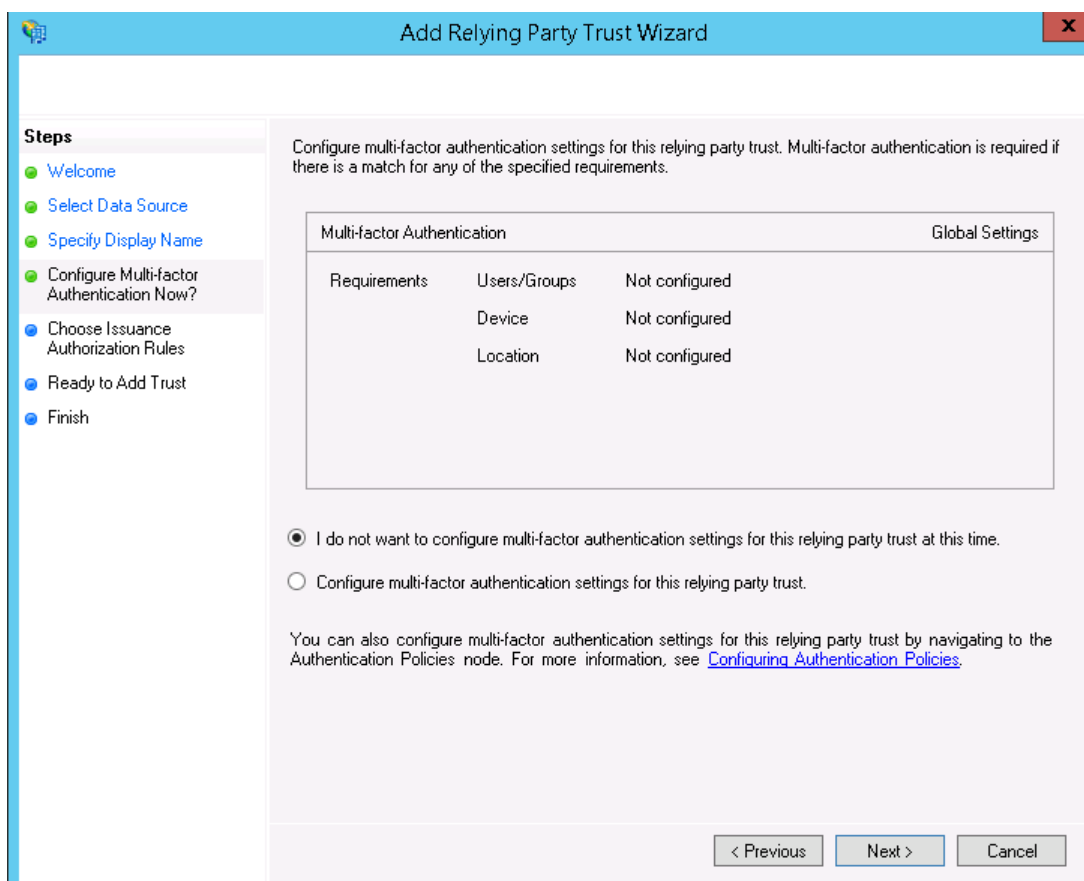
skal angi "https://service.learnifier.com/auth_saml/saml/metadata" i feltet.

The screenshot shows a Windows-style dialog box titled "Add Relying Party Trust Wizard" with a close button (X) in the top right corner. The main area is titled "Select Data Source". On the left, a "Steps" pane lists: Welcome (green dot), Select Data Source (green dot), Configure Multi-factor Authentication Now? (blue dot), Choose Issuance Authorization Rules (blue dot), Ready to Add Trust (blue dot), and Finish (blue dot). The main content area has the instruction: "Select an option that this wizard will use to obtain data about this relying party:". There are three radio button options: 1. "Import data about the relying party published online or on a local network" (selected). Below it is the text: "Use this option to import the necessary data and certificates from a relying party organization that publishes its federation metadata online or on a local network." and a text box containing "https://service.learnifier.com/auth_saml/saml/metadata". Below the text box is the text: "Federation metadata address (host name or URL):" and "Example: fs.contoso.com or https://www.contoso.com/app". 2. "Import data about the relying party from a file". Below it is the text: "Use this option to import the necessary data and certificates from a relying party organization that has exported its federation metadata to a file. Ensure that this file is from a trusted source. This wizard will not validate the source of the file." and a text box for "Federation metadata file location:" with a "Browse..." button. 3. "Enter data about the relying party manually". Below it is the text: "Use this option to manually input the necessary data about this relying party organization." At the bottom right, there are three buttons: "< Previous", "Next >", and "Cancel".

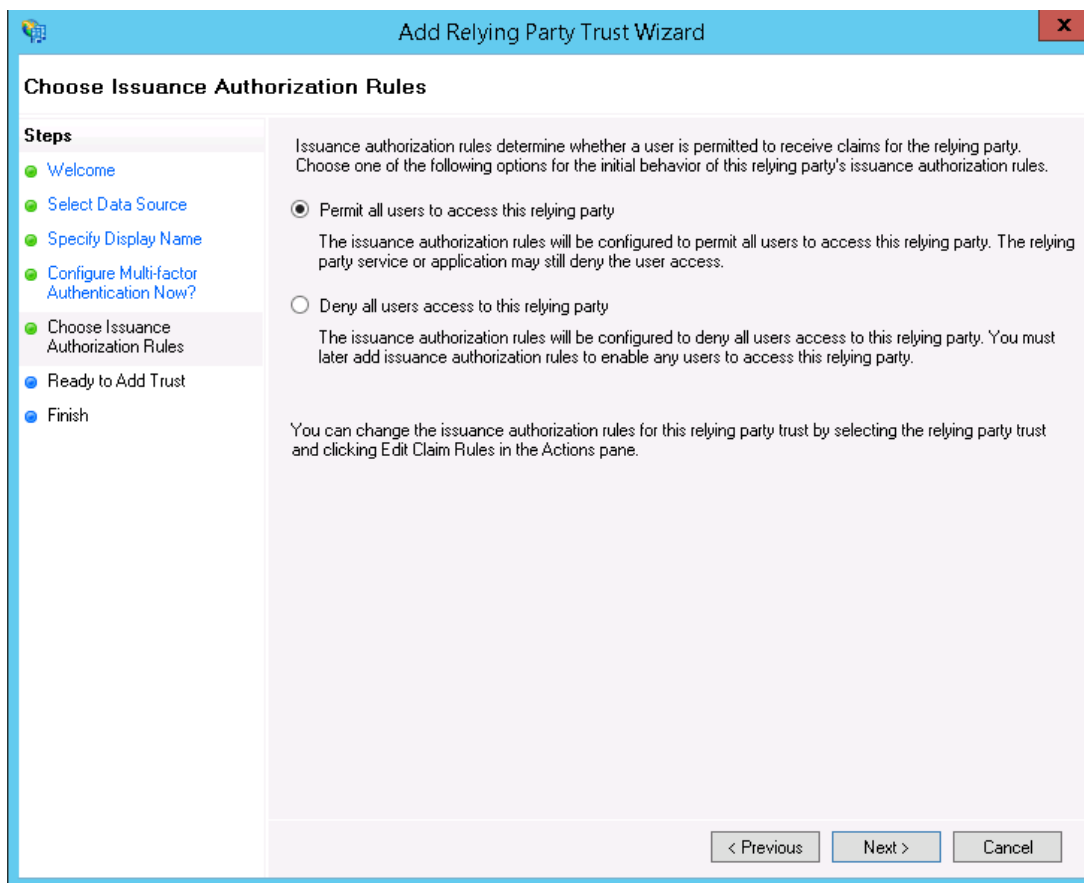
Rediger "display name" og "note" om nødvendig. Når du er ferdig, klikker du på "Next".

The screenshot shows a Windows-style window titled "Add Relying Party Trust Wizard" with a close button in the top right corner. The main heading is "Specify Display Name". On the left, a "Steps" pane lists the following steps: "Welcome" (green dot), "Select Data Source" (green dot), "Specify Display Name" (green dot and highlighted), "Configure Multi-factor Authentication Now?" (blue dot), "Choose Issuance Authorization Rules" (blue dot), "Ready to Add Trust" (blue dot), and "Finish" (blue dot). The main area contains the instruction "Enter the display name and any optional notes for this relying party." Below this, there is a "Display name:" label and a text box containing "service.learnifier.com". Underneath is a "Notes:" label and a large empty text area with a vertical scrollbar on the right. At the bottom right, there are three buttons: "< Previous", "Next >", and "Cancel".

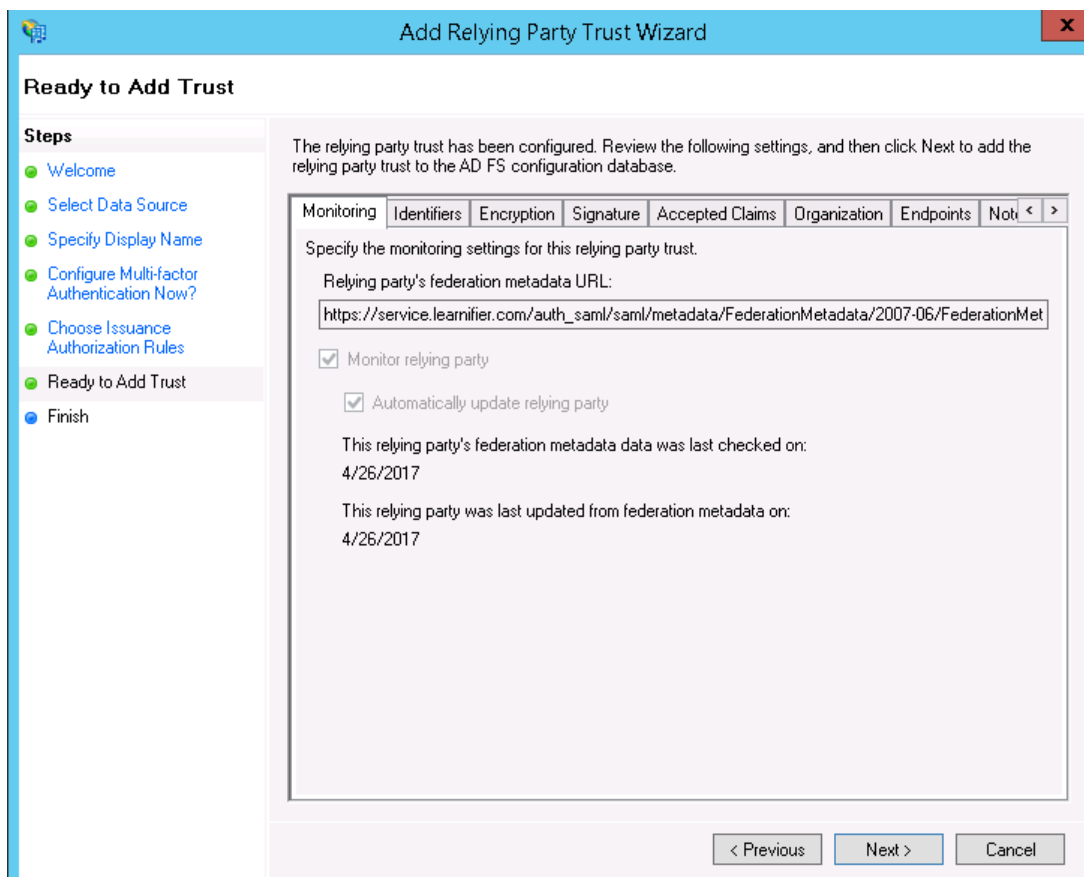
På denne siden velger du å ikke bruke MFA (Multi-Factor Authentication).



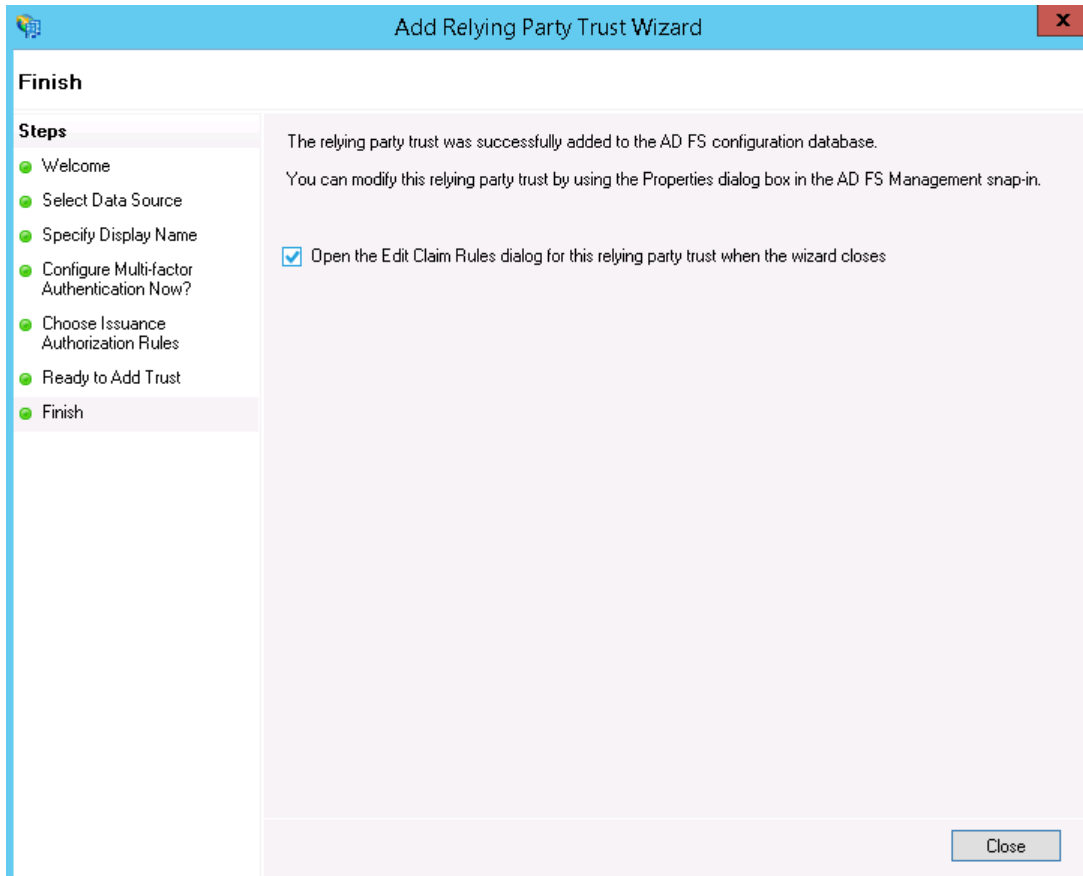
På denne siden tillater du alle brukere å få tilgang til Learnifier.



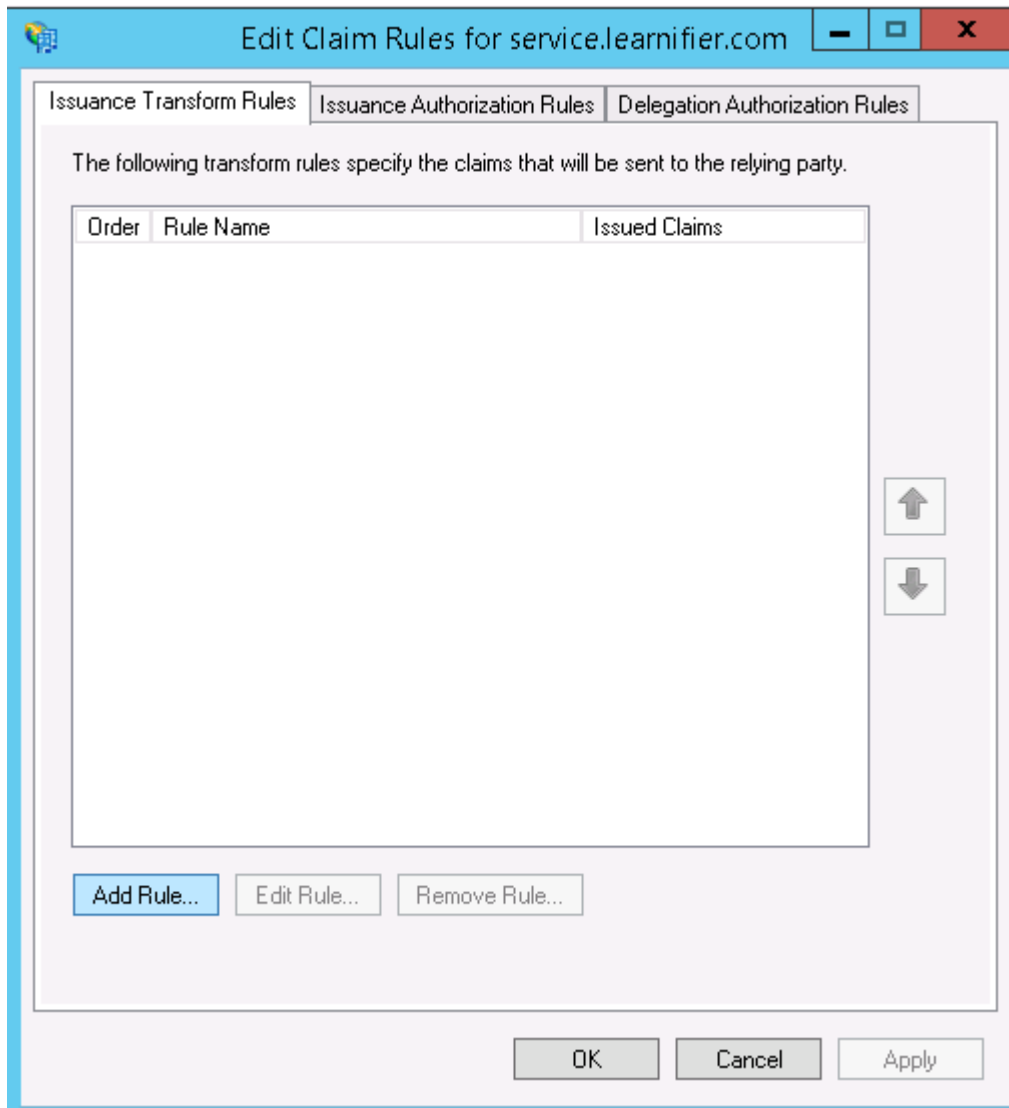
På denne siden klikker du bare på "Next".



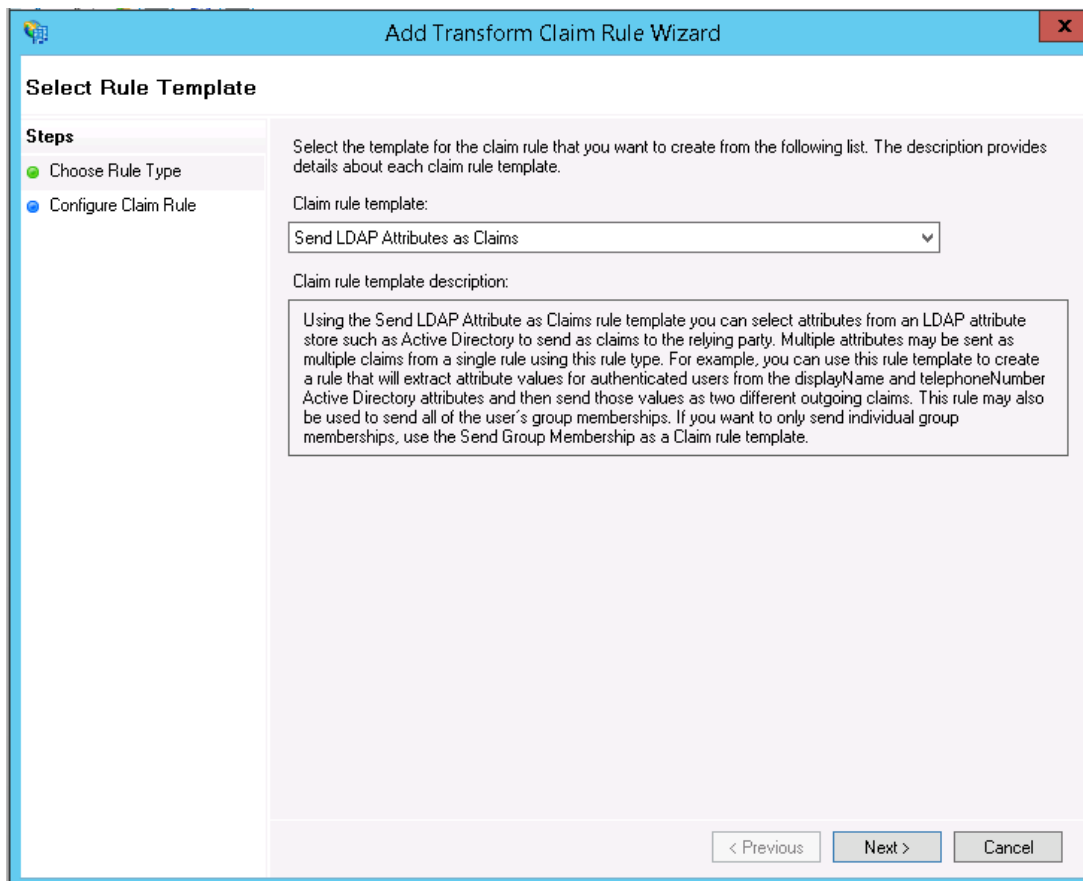
Sørg for at avmerkingsboksen er merket og klikk på "Close".



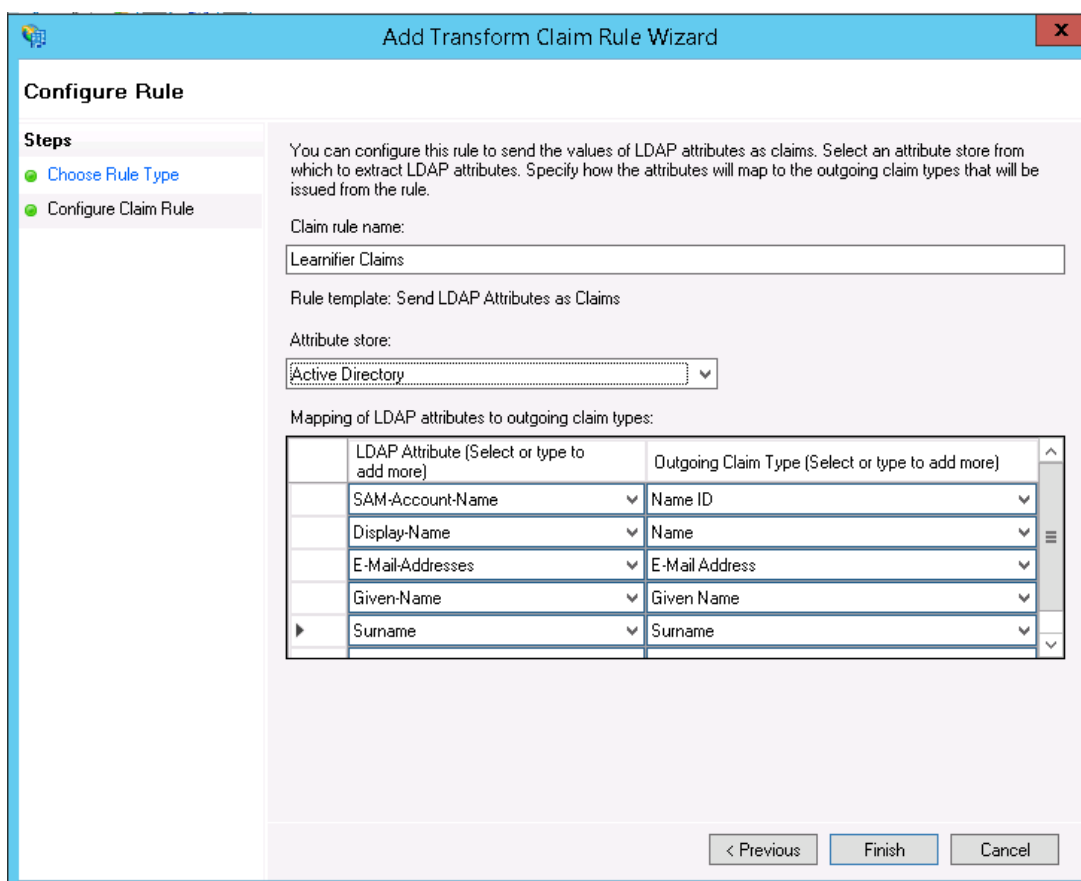
Klikk på "Add Rule".



Velg å sende "LDAP Attributes" som Claims.



Angi "Learnifier Claims" som Claim rule name. Sørg for at "Attribute Store" er "Active Director" og legg til verdiene som vist på skjermbildet.



Trinn 3 - Kontakt Learnifier

Kontakt din representant og gi ham/henne URL-en for SAML-metadata for ditt Active Directory Federation Services. Hvis "login web server" / AD FS er tilgjengelig på <https://login.example.com>, er metadata vanligvis tilgjengelig på <https://login.example.com/FederationMetadata/2007-06/FederationMetadata.xml>. Lenken må være en HTTP-lenke, og serveren må være tilgjengelig fra det offentlige internettet.

Du bør få en "response" kort tid etter at tilkoblingen er etablert.

Feilsøking

Sørg for at Secure hash algorithm er satt til SHA-256 (tilgjengelig under fanen "Advanced") i den opprettede Relying Party Trust.